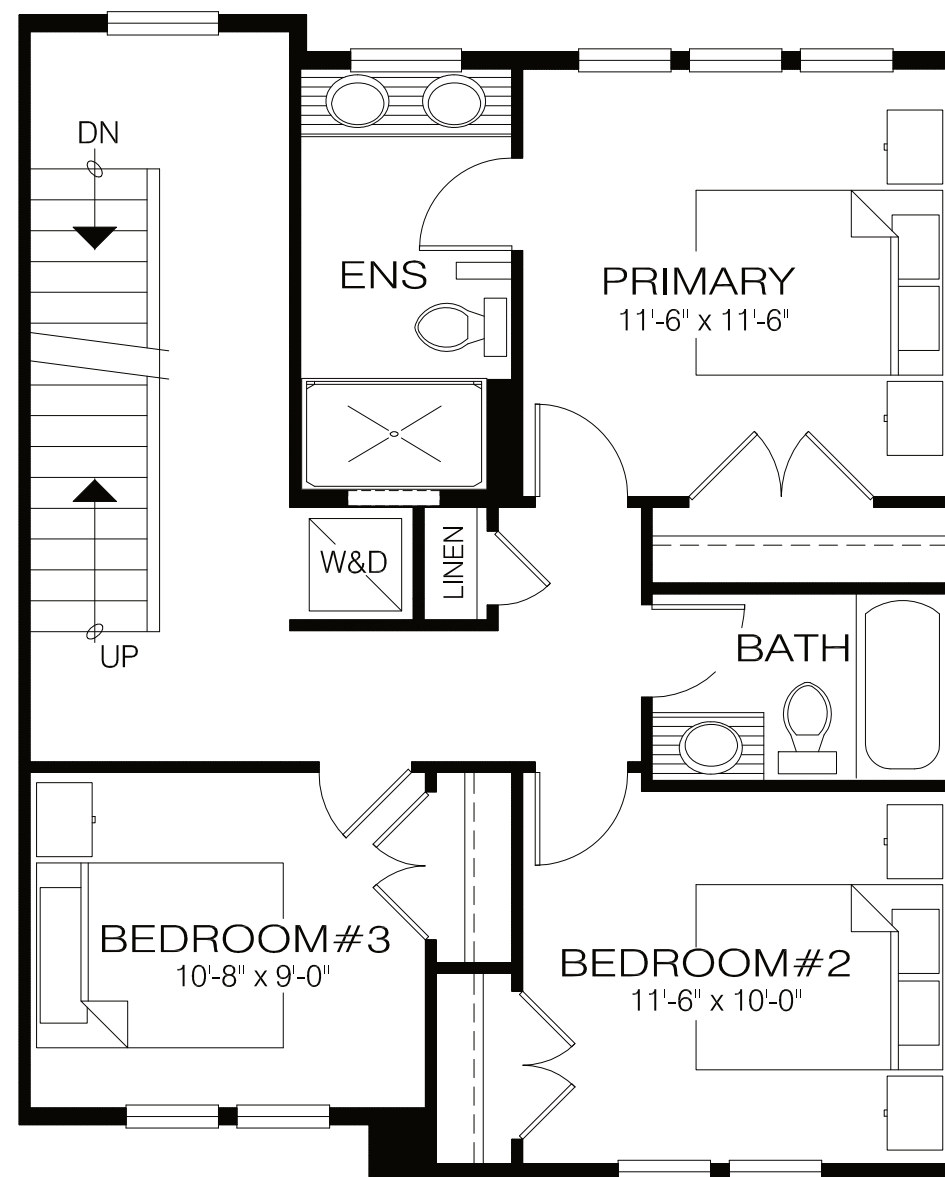


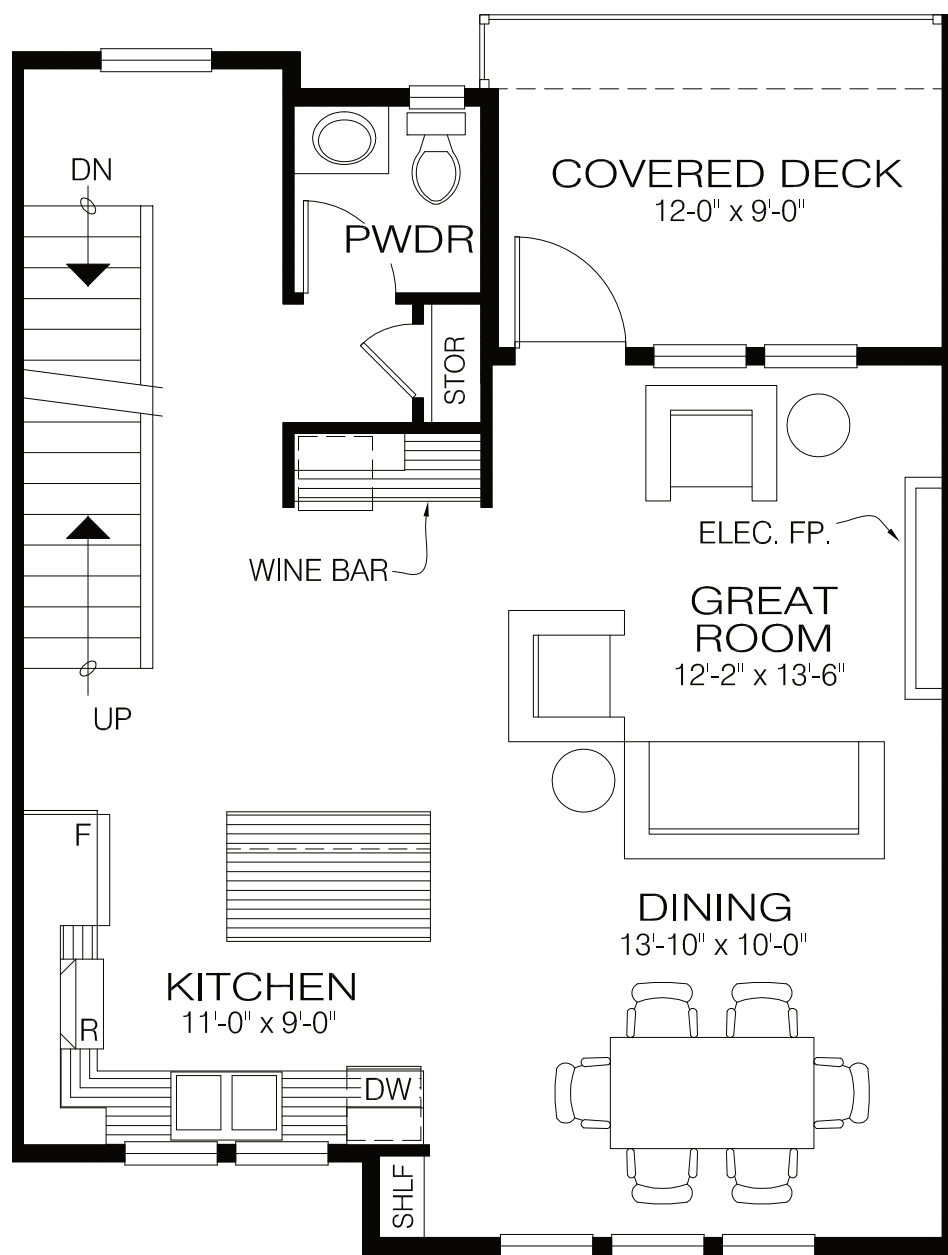
LOWER FLOOR PLAN

FINISHED AREA = 374 SQ. FT.
GARAGE/UTILITY = 374 SQ. FT.
9'-0 3/4" CEILING HEIGHT



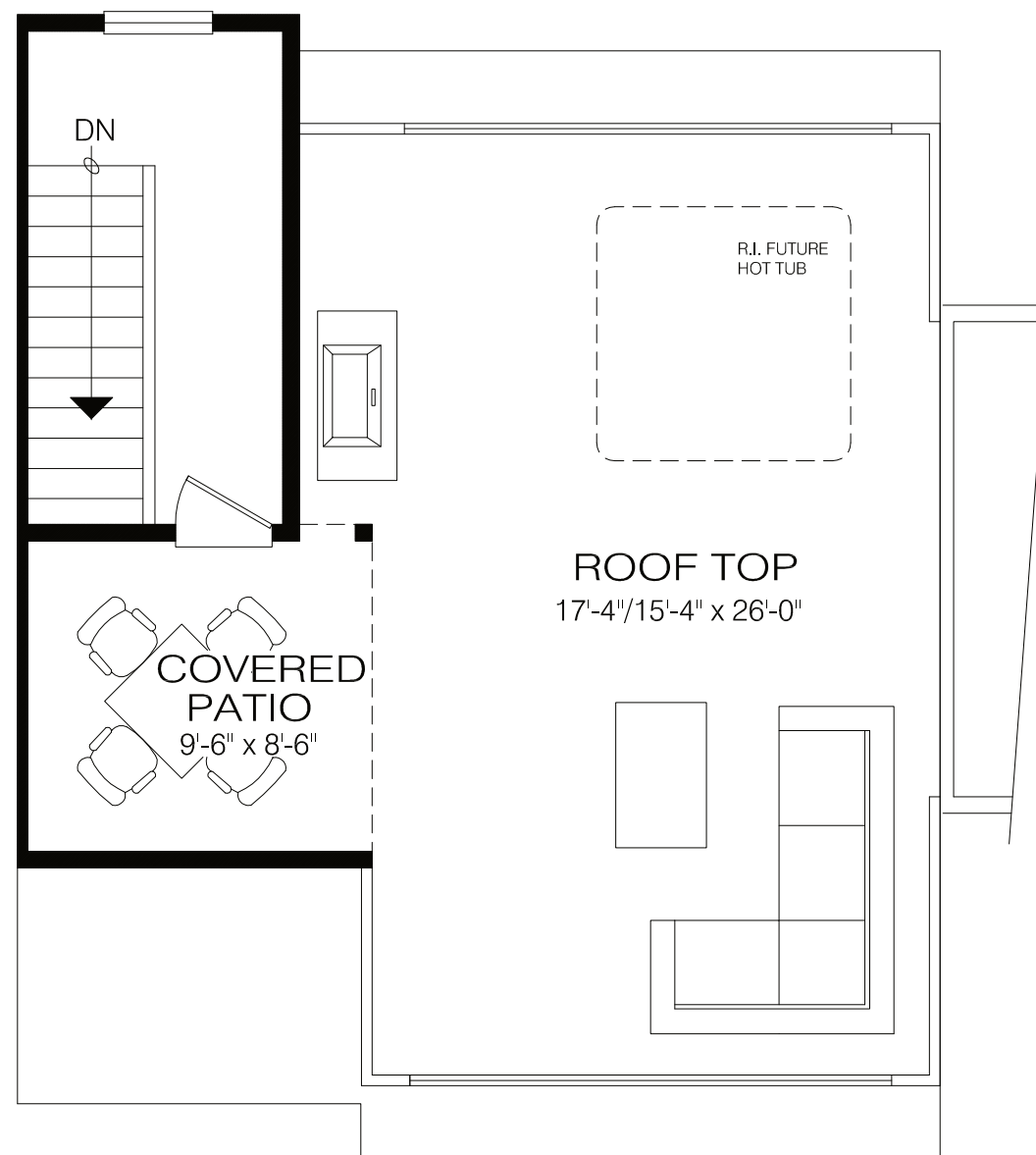
UPPER FLOOR PLAN

FINISHED AREA = 771 SQ. FT.
8'-0 3/4" CEILING HEIGHT



MAIN FLOOR PLAN

FINISHED AREA = 701 SQ. FT.
9'-0 3/4" CEILING HEIGHT



ROOF TOP PLAN

FINISHED AREA = 113 SQ. FT.
PATIO AREA = 527 SQ. FT.

